

Common Area  
Renovations  
Underway

# OFFICE SPACE FOR LEASE

## WOODFIELD OFFICE PARK



29500 - 29556 Southfield Rd, Southfield, Michigan  
Excellent location 1/4 mile north of 12 Mile Road

- ◆ High Speed Internet / Cable Access
- ◆ Close, Easy Access to I-696
- ◆ Exterior Signage Rights
- ◆ Ample Parking
- ◆ Front and Rear Entries
- ◆ Climate-Controlled Heating & Cooling (each wing)
- ◆ Outdoor Lighting for Maximum Safety
- ◆ Easy Access to Banks, Restaurants, Shopping
- ◆ On-Site Management/Ownership
- ◆ 8 Building Campus Environment
- ◆ Quite, Park-like Setting
- ◆ Picnic Area with Gazebo

Property Managed and Leased by:

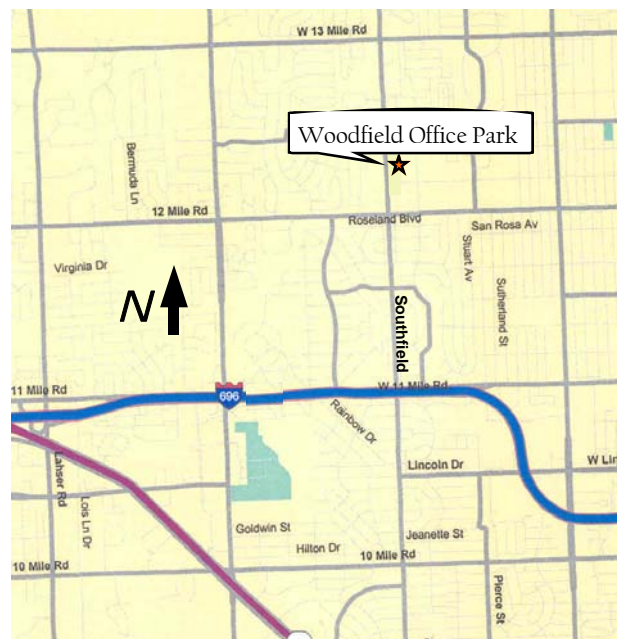
**ARI-EL**

**Ari-El Enterprises, Inc.**  
29548 Southfield Road, Suite 200  
Southfield, MI 48076-2028  
(248) 557-3800 Fax (248) 557-6442  
[www.ari-el.com](http://www.ari-el.com)  
[Mmeredith@ari-el.com](mailto:Mmeredith@ari-el.com)  
[ScottL@ari-el.com](mailto:ScottL@ari-el.com)

**First Floor Space  
NOW AVAILABLE!**

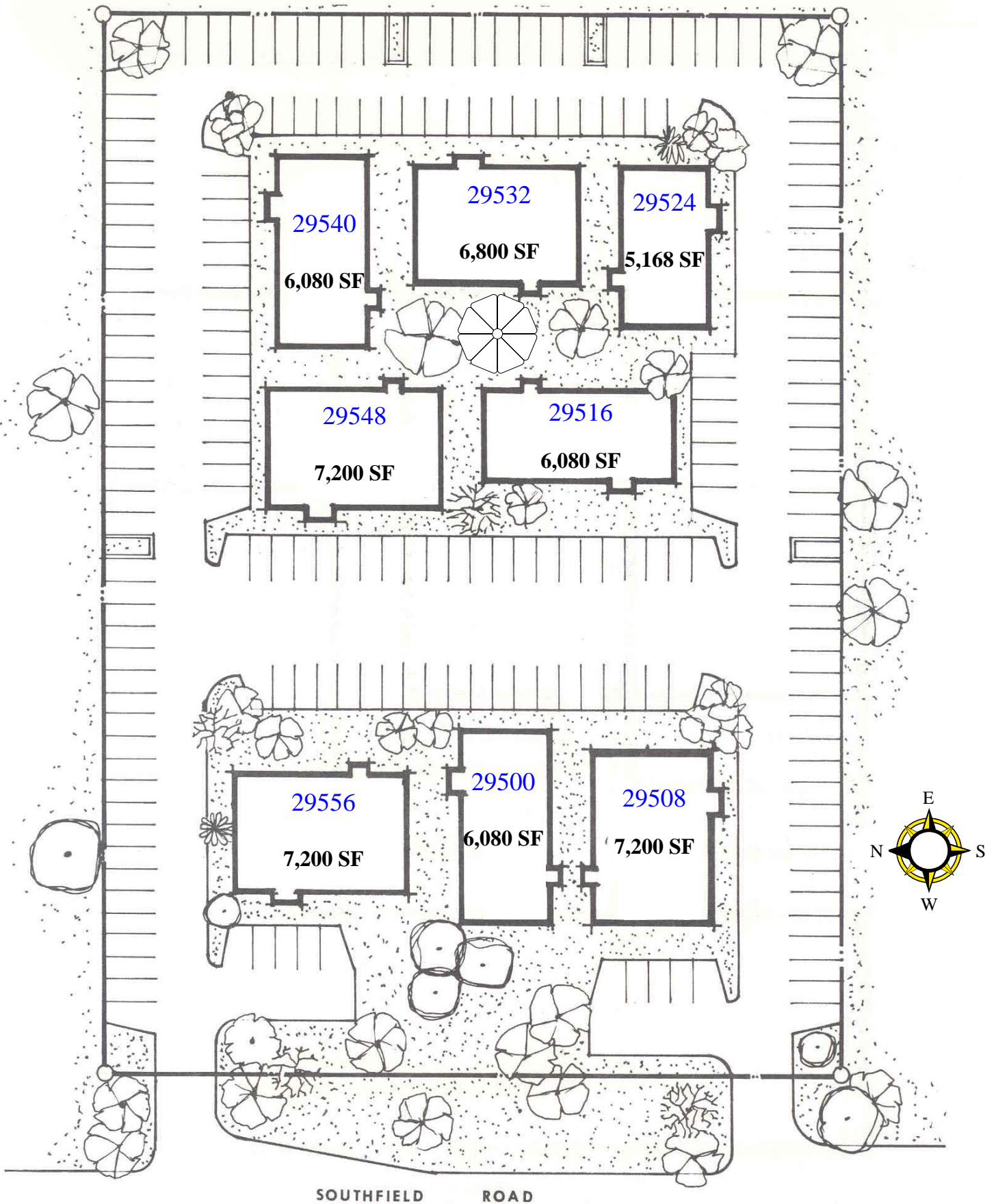
**MOVE UP IN THE  
BUSINESS WORLD  
WITHOUT MOVING  
OUT OF YOUR  
PRICE RANGE**

Suites range in size from  
160 square feet to full floors  
of approximately  
2,800 square feet



**For further information or  
to schedule a tour,  
please contact:  
Marilyn Meredith  
or  
Scott M. Leibovitz**

Information is subject to verification and no liability for errors or omissions is assumed. Price and terms are subject to modification.



Site Plan

WOODFIELD OFFICE PARK