

PHARMACEUTICAL MANUFACTURING SPACE FOR LEASE

ANN ARBOR, MICHIGAN

NOW AVAILABLE
Turn-Key
cGMP Pharmaceutical/Biologic
Manufacturing Space

Including 6,240 sq. ft. Qualified cGMP area

Only \$6.95/SF NNN



Ann Arbor Commerce Center

3930-3940 and 3970 Varsity Drive, Ann Arbor, MI

Just south of I-94 between State Street and Stone School Road off Ellsworth Road



- ◆ Multi-Tenant
- ◆ Office/Warehouse
- ◆ Grade Level Doors
- ◆ 16' Ceiling Height
- ◆ Ample Parking
- ◆ Many possible uses
- ◆ Sizes from approx. 2,160 SF to 6,240 SF

Property Managed by:

ARI-EL

Ari-El Enterprises, Inc.

29548 Southfield Road, Suite 200

Southfield, MI 48076-2028

(248) 557-3800 Fax (248) 557-6442

www.ari-el.com

Mmeredith@ari-el.com

ScottL@ari-el.com

**For further information or
to schedule a tour,
please contact:**

Jay Chavey

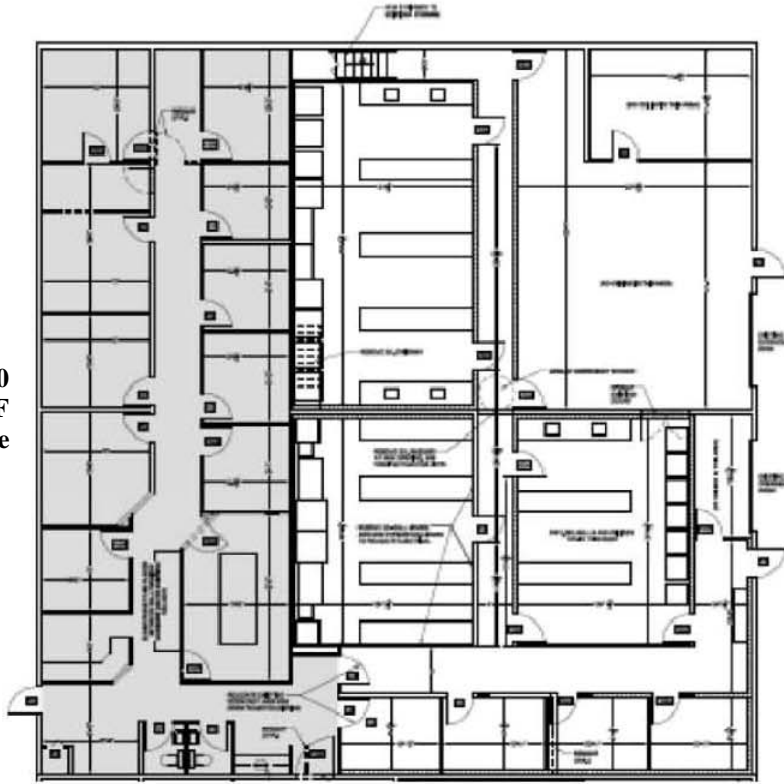
Signature Associates

248-948-4196

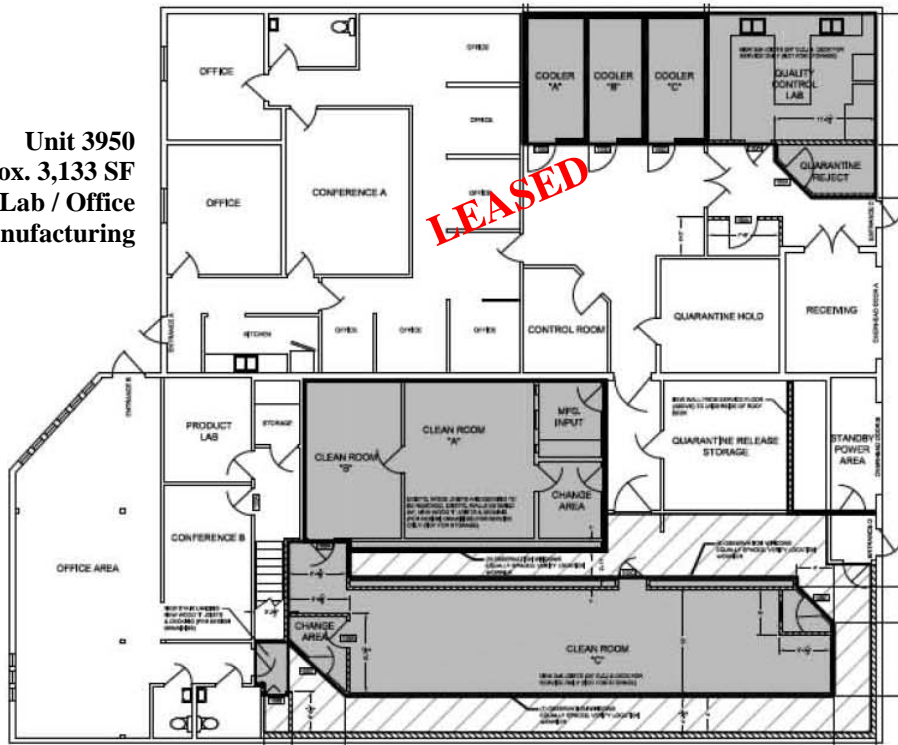
jchavey@signatureassociates.com

Information is subject to verification and no liability for errors or omissions is assumed. Price and terms are subject to modification.

Units 3960-3970
 Approx. 6,239 SF
 Wet Lab, 8 offices and storage



Unit 3950
 Approx. 3,133 SF
 Wet Lab / Office
 Manufacturing



Unit 3940
 Approx. 3,810 SF
 Office /
 Manufacturing

