

TROY RESEARCH & DEVELOPMENT BUILDING

FOR SALE OR FOR LEASE

46,205 SQUARE FEET



900 W. Maple Road, Troy North side of Maple, between Crooks and Livernois

- ◆ Building totally renovated in 2002
- ◆ Approximately 54% office with phone/computer room and materials lab
- ◆ Approximately 46% dyno and process laboratory / storage / garage
- ◆ 3 Grade level doors (one oversized)
- ◆ Fully air conditioned
- ◆ 2000 amp 277/480V 3 phase 4 wire
- ◆ Fire suppression system throughout
- ◆ Possible rezoning opportunity

For further information or to schedule

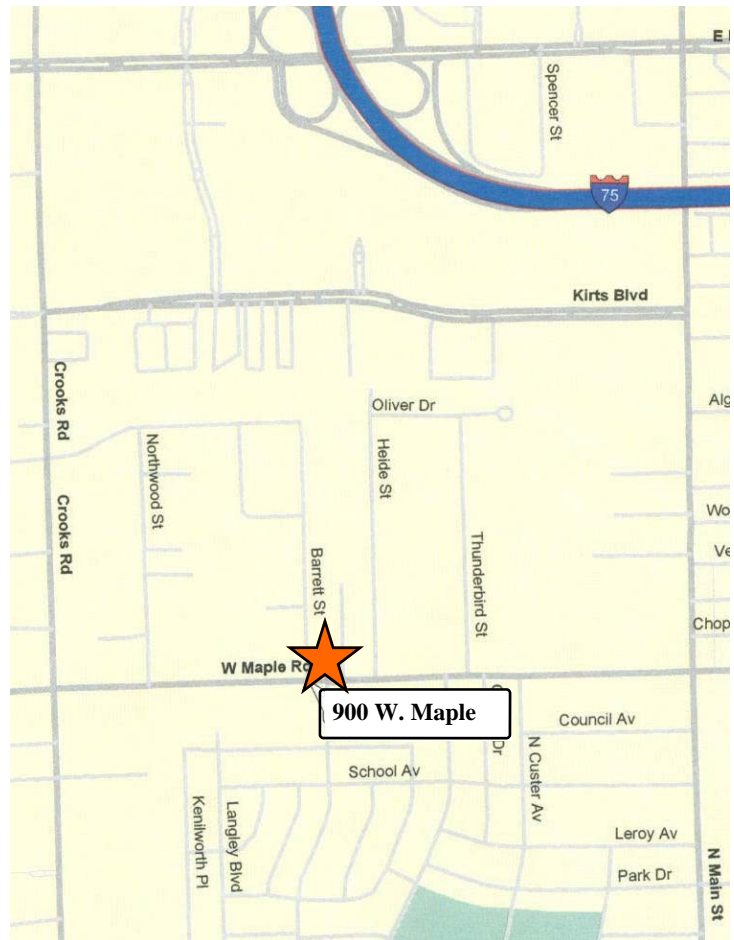
a tour, please contact:

**Marilyn Meredith or
Scott Leibovitz
(248) 557-3800**

Property Managed and Leased by:

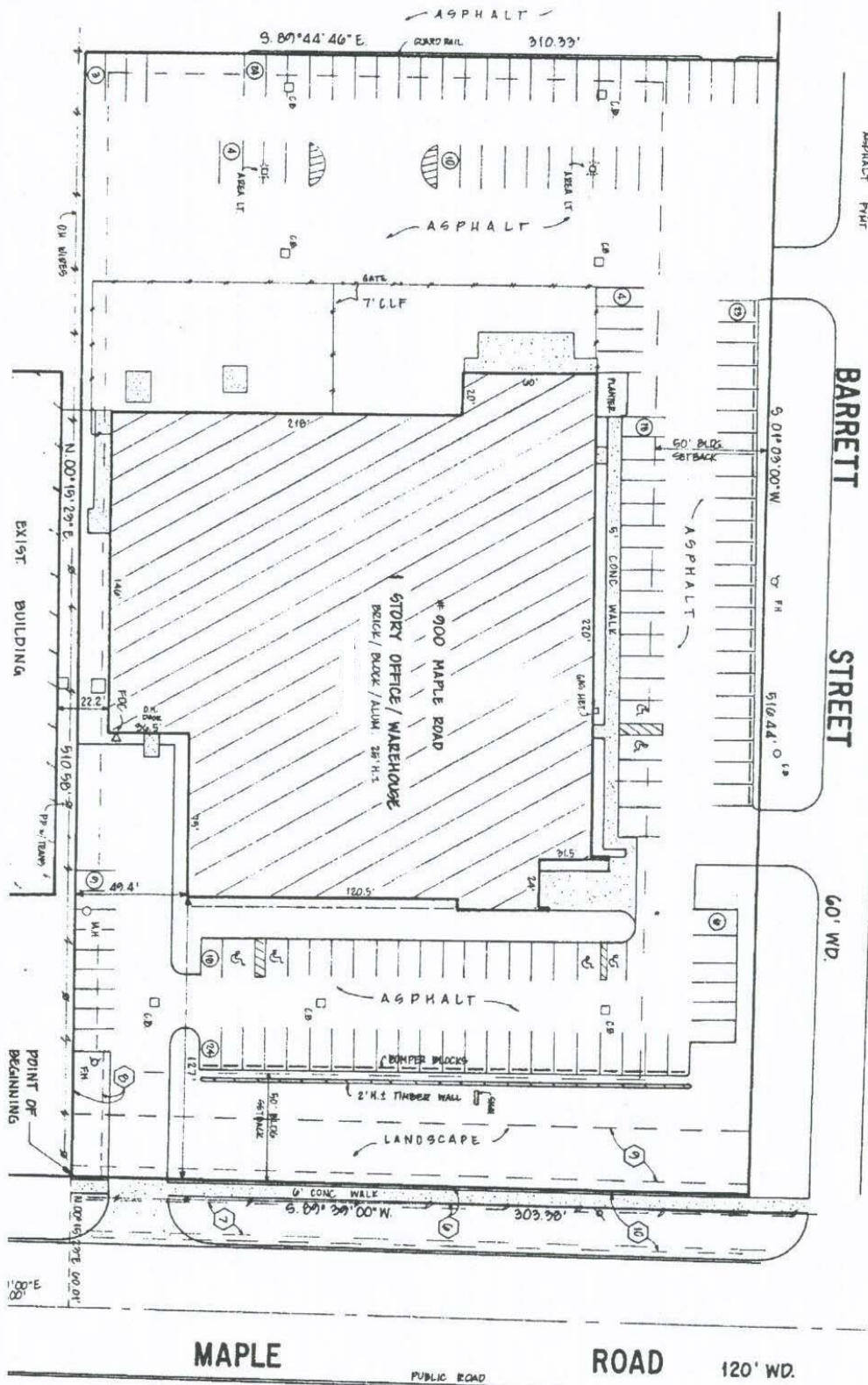
ARI-EL

Ari-El Enterprises, Inc.
29548 Southfield Road, Suite 200
Southfield, MI 48076-2028
(248) 557-3800 Fax (248) 557-6442
www.ari-el.com
Mmeredith@ari-el.com
ScottL@ari-el.com

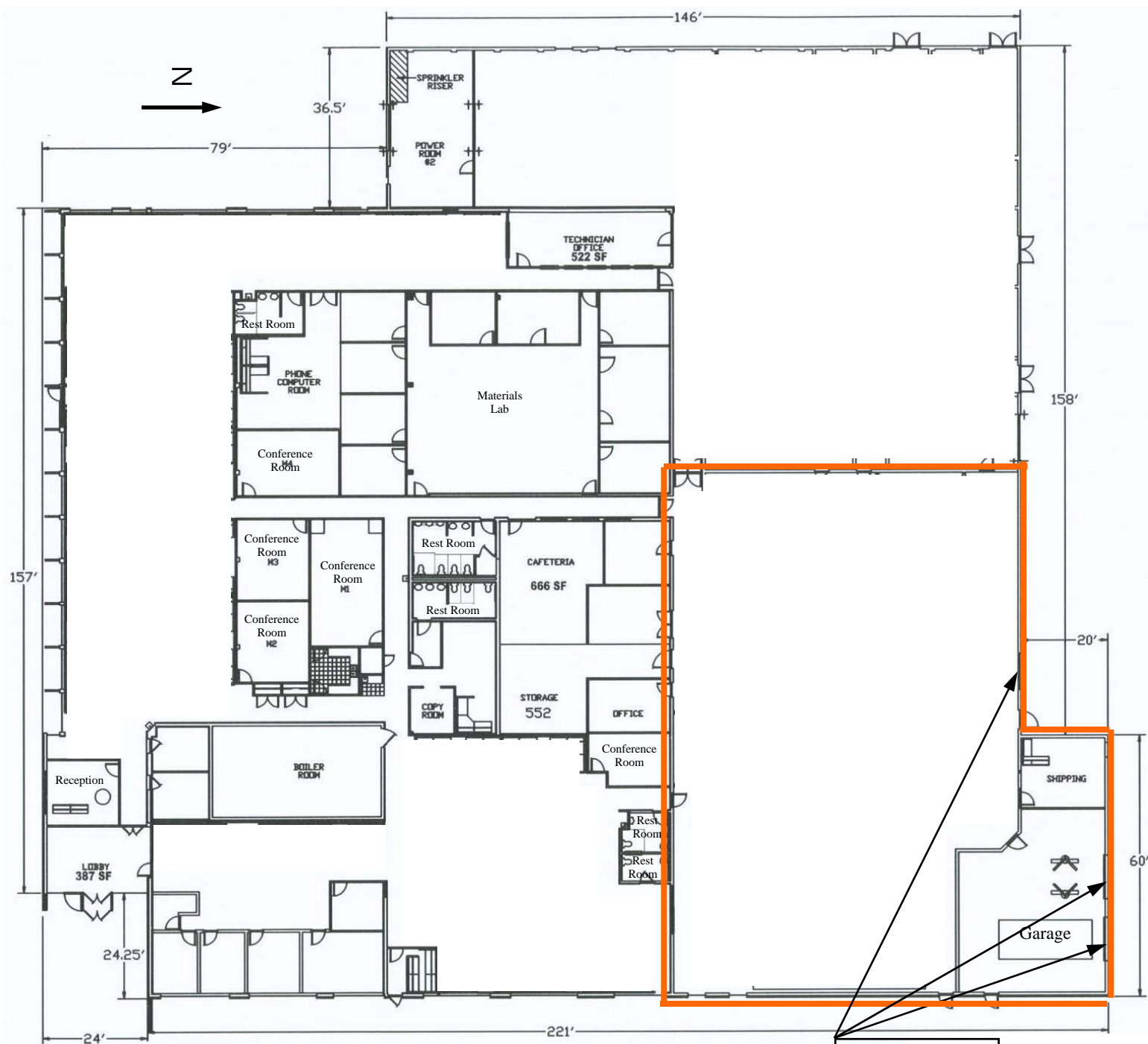


Information is subject to verification and no liability for errors or omissions is assumed. Price and terms are subject to modification.

SITE PLAN



Note: Sketch not drawn to scale.



Roof joist 14' A.F.F.
 All other areas 11'

Grade Level Doors

Leased and Managed by:

ARI-EL

Ari-El Enterprises, Inc.
 (248) 557-3800
 www.ari-el.com

900 W. Maple Road
Troy, Michigan
46,205 square feet

10.14.2010