

TROY RESEARCH & DEVELOPMENT BUILDING FOR SALE OR FOR LEASE 46,800 SQUARE FEET



900 W. Maple Road, Troy North side of Maple, between Crooks and Livernois

- ◆ Approximately 54% office with phone/computer room and materials lab
- ◆ Approximately 46% dyno and process laboratory / storage / garage
- ◆ 3 Grade level doors (one oversized)
- ◆ Fully air conditioned
- ◆ 2000 amp 277/480V 3 phase 4 wire
- ◆ Fire suppression system throughout
- ◆ Possible rezoning opportunity

**For further information or to
schedule a tour, please contact:**

**Marilyn Meredith
or
Scott M. Leibovitz**

Property Managed and Leased by:

ARI-EL

Ari-El Enterprises, Inc.

29548 Southfield Road, Suite 200
Southfield, MI 48076-2028

(248) 557-3800 Fax (248) 557-6442

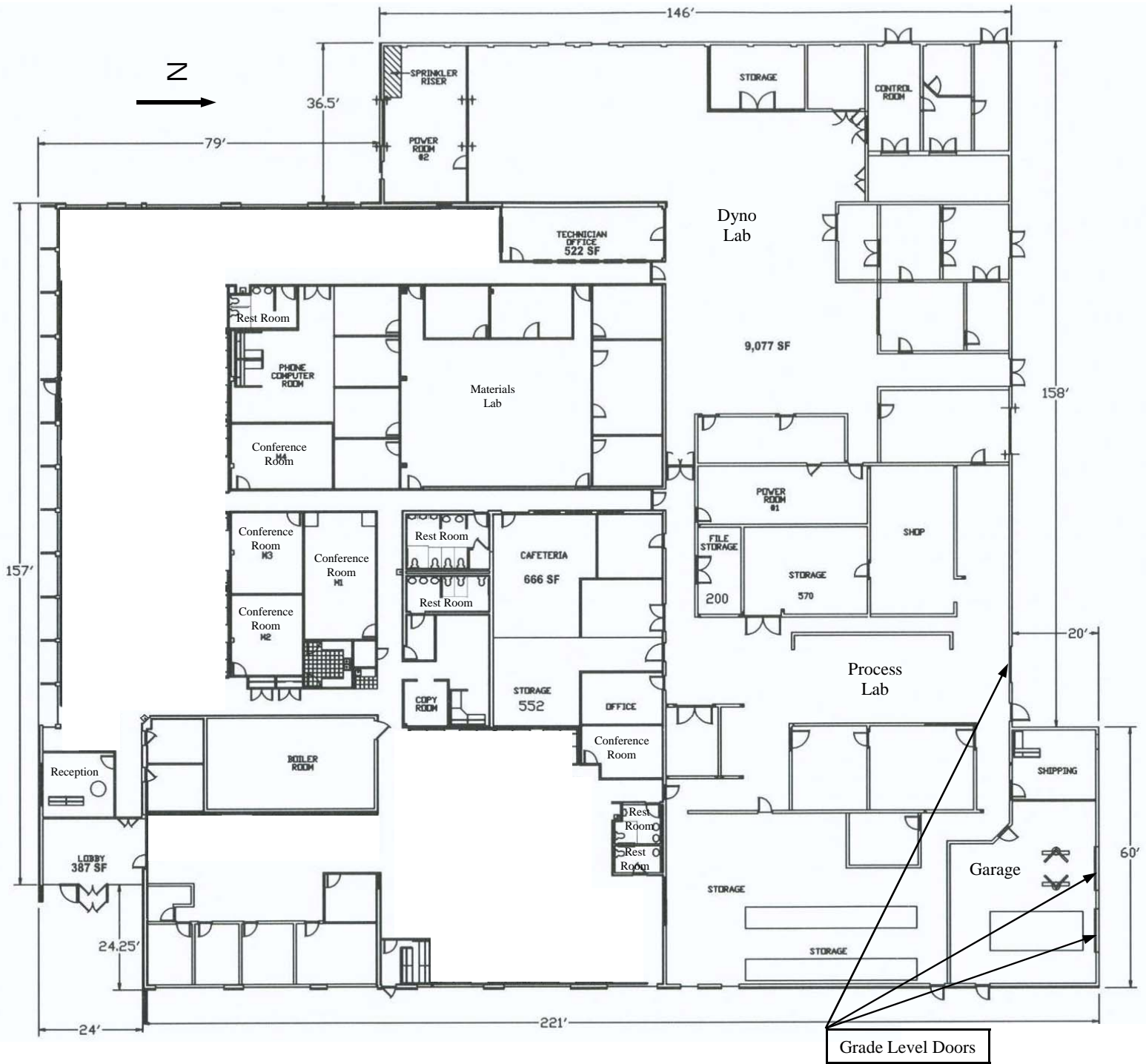
www.ari-el.com

Mmeredith@ari-el.com

ScottL@ari-el.com



Information is subject to verification and no liability for errors or omissions is assumed. Price and terms are subject to modification.



Leased and Managed by:

ARI-EL

Ari-El Enterprises, Inc.
 (248) 557-3800
 www.ari-el.com

**900 W. Maple Road
 Troy, Michigan
 46,800 square feet**

4.6.2009