

# *Prime Free Standing Restaurant Available for Lease!*

## **5656 MAPLE ROAD**

**WEST BLOOMFIELD, MICHIGAN**



- ▶ **Approx. 8,100 SF Building**
- ▶ **243' frontage on Maple Road**
- ▶ **Approx. 1.6 Acres**
- ▶ **123 parking spaces**

**Conveniently located on the north side of Maple Road just east of Orchard Lake Road**



- ▶ **Heart of West Bloomfield**
- ▶ **High income area (\$130,000/year)**
- ▶ **60,000 households within 5 mile radius**
- ▶ **Over 28,400 cars per day on Maple Road**
- ▶ **Positioned between Hillers Market and the future Plum Market**

Property Managed and Leased by:

**ARI-EL**

**Ari-El Enterprises, Inc.**

29548 Southfield Road, Suite 200

Southfield, MI 48076-2028

**(248) 557-3800** Fax (248) 557-6442

**www.ari-el.com**

[Mmeredith@ari-el.com](mailto:Mmeredith@ari-el.com)

[ScottL@ari-el.com](mailto:ScottL@ari-el.com)

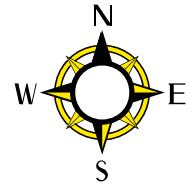
**For further information please contact:**

**Marilyn Meredith**

**or**

**Scott M. Leibovitz**

Information is subject to verification and no liability for errors or omissions is assumed. Price and terms are subject to modification.



Managed and Leased by:

**ARI-EL**

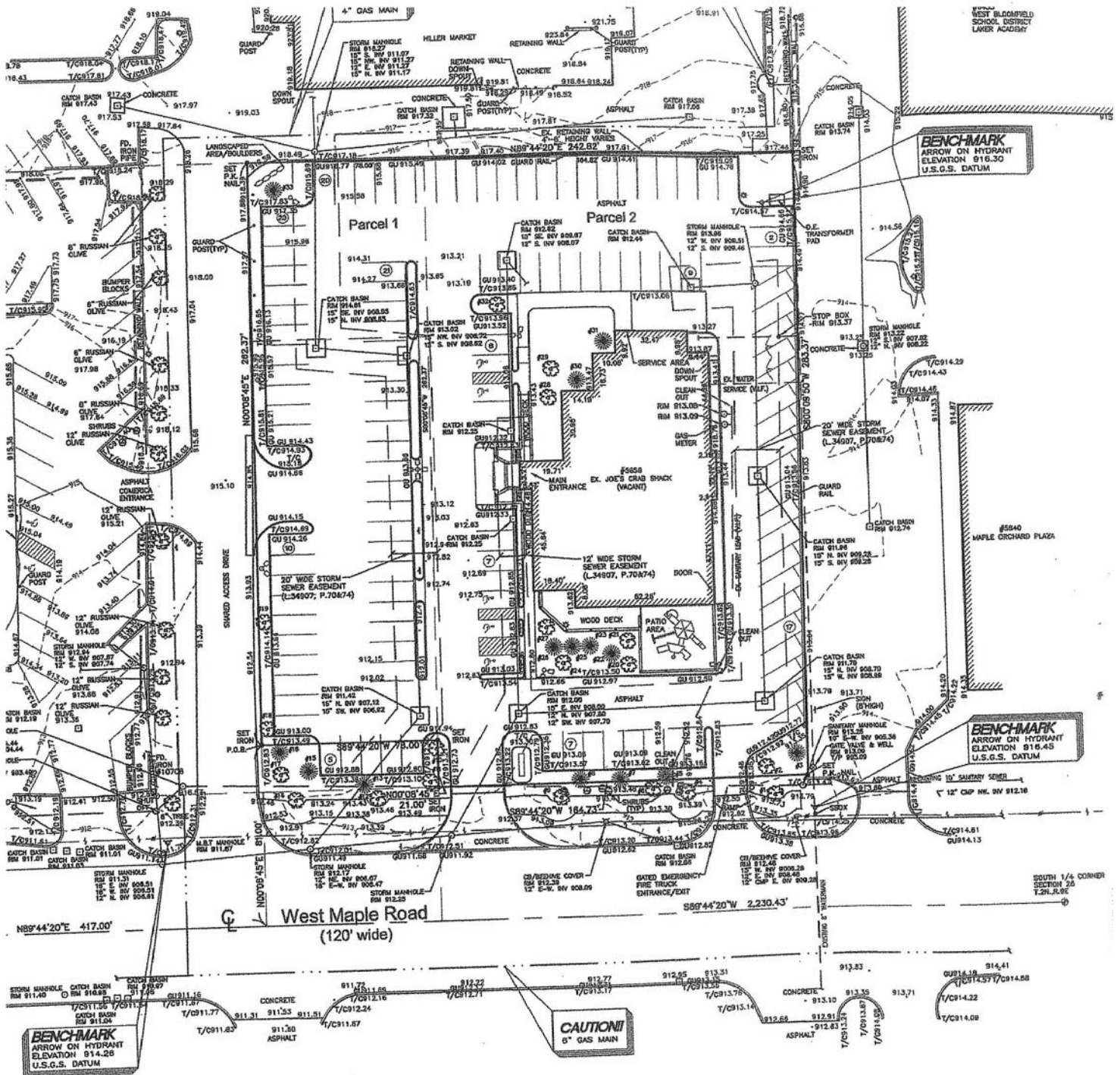
Ari-El Enterprises, Inc.  
(248) 557-3800  
www.ari-el.com

**5656 W. Maple Road**  
West Bloomfield, MI

10.21.2011



# Existing Site Plan



**5656 W. Maple Road**  
West Bloomfield, MI

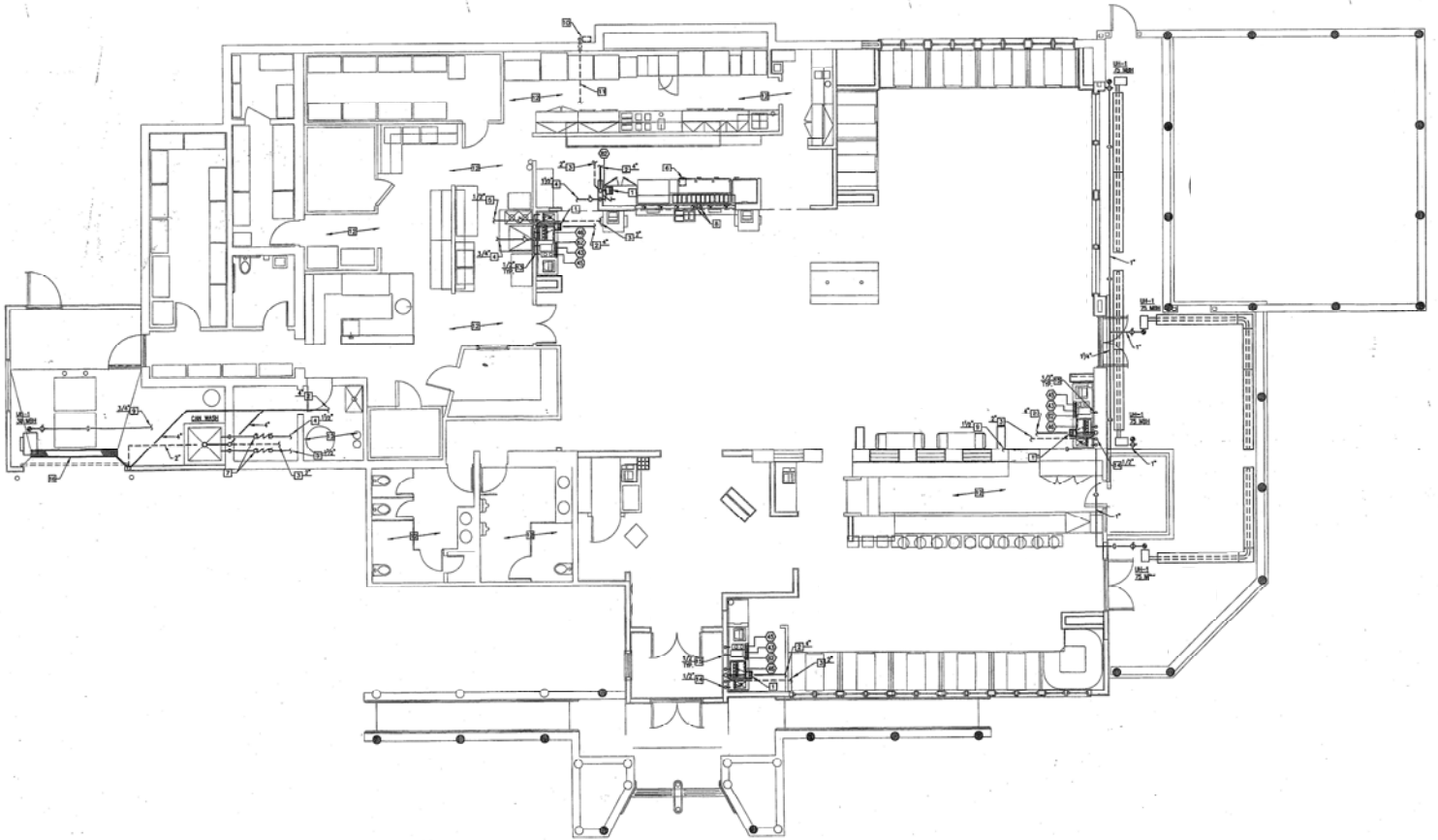
Managed and Leased by:

**ari-el**

Ari-El Enterprises, Inc.  
(248) 557-3800  
www.ari-el.com

Approx. 8,100 SF Building  
243' Frontage on Maple Road  
Approx. 1.6 Acres  
123 Parking Spaces

# Existing Floor Plan



Managed and Leased by:

**ARI-EL**

Ari-El Enterprises, Inc.  
(248) 557-3800  
www.ari-el.com

**5656 W. Maple Road**  
West Bloomfield, MI

Approx. 8,100 SF Building  
243' Frontage on Maple Road  
Approx. 1.6 Acres  
123 Parking Spaces

10.21.2011



Managed and Leased by:

**ARI-EL**

Ari-El Enterprises, Inc.  
(248) 557-3800  
www.ari-el.com

**5656 W. Maple Road**  
West Bloomfield, MI

10.21.2011