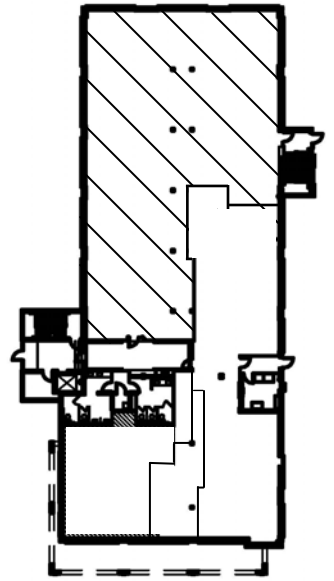


Exterior Exit



Lobby Entrance

**KINGSWOOD OFFICE BUILDING**  
**43097 Woodward Avenue**  
**Suite 100**

Bloomfield Hills, MI

Leased and Managed by:



Ari-El Enterprises, Inc.  
**(248) 557-3800**  
[www.ari-el.com](http://www.ari-el.com)

**Approx. 5,688 Rentable Square Feet**

*Not to Scale*  
*Dimensions and positions of walls are approximate*  
*and subject to verification*

10.21.2011



### Pictures of 43097 Woodward, Suite 100

