

JEFFRIES TECH CENTER
37665-67 Schoolcraft Road
 Livonia, MI

ARI-EL

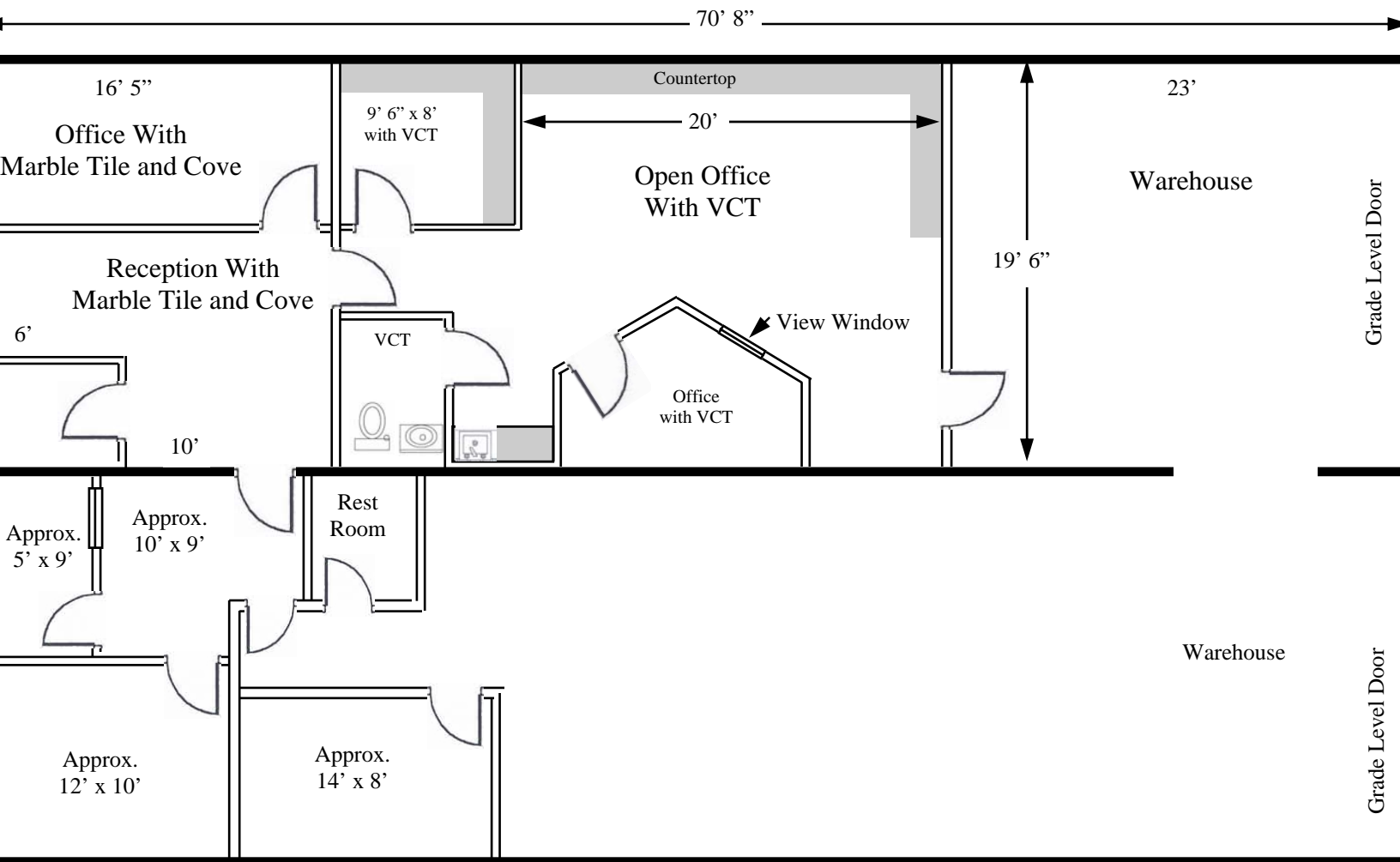
Leased and Managed by:

Ari-El Enterprises, Inc.
(248) 557-3800
www.ari-el.com

Approx. 2,826 sq. ft.
 Approx. 1,660 sq. ft. Office
 2 Grade Level Doors

Not to Scale
Dimensions and positions of walls are approximate and subject to verification

6.1.2010



ARI-EL

Designed and Managed by:

Ari-El Enterprises, Inc.
 (313) 557-3800
 www.ari-el.com

JEFFRIES TECH CENTER
37665-67 Schoolcraft Road
 Livonia, MI

Approx. 2,826 sq. ft.
 Approx. 1,660 sq. ft. Office
 2 Grade Level Doors

Not to Scale
 Dimensions and positions of walls are approximate and subject to verification.