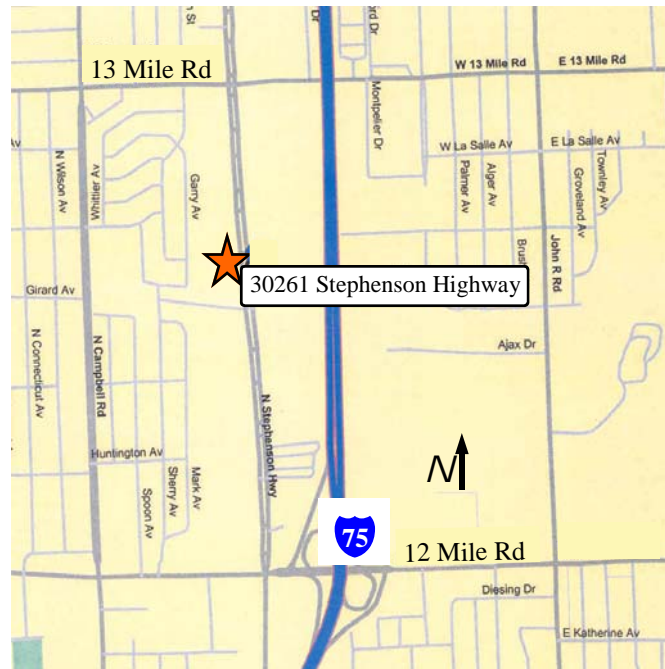


**R & D BUILDING  
FOR SALE OR LEASE  
13,200 SQUARE FEET  
MADISON HEIGHTS, MICHIGAN**



**30261 Stephenson Highway**  
Excellent location  
South of 13 Mile Road

- ◆ Hi-Tech / R & D Facility
- ◆ Single Tenant Building
- ◆ 90% Office
- ◆ Air Conditioned
- ◆ 1 Grade Level Door
- ◆ Parking for 48 Vehicles
- ◆ Main Road Exposure
- ◆ Easy freeway access



Property Managed and Leased by:

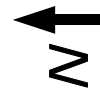
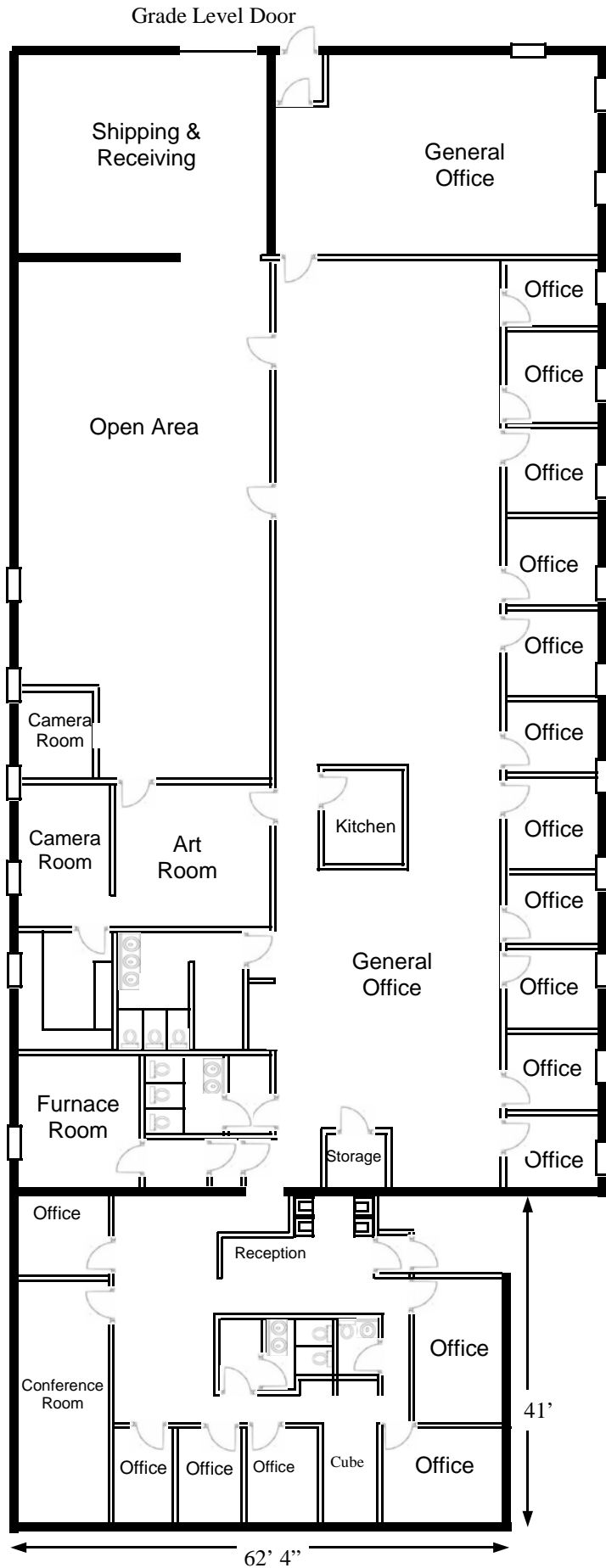


**Ari-El Enterprises, Inc.**  
29548 Southfield Road, Suite 200  
Southfield, MI 48076-2028  
**(248) 557-3800** Fax (248) 557-6442  
[www.ari-el.com](http://www.ari-el.com)  
[Mmeredith@ari-el.com](mailto:Mmeredith@ari-el.com)  
[ScottL@ari-el.com](mailto:ScottL@ari-el.com)

**For further information or  
to schedule a tour,  
please contact:  
Marilyn Meredith  
or  
Scott M. Leibovitz**

Information is subject to verification and no liability for errors or omissions is assumed. Price and terms are subject to modification.

Stephenson Highway



**30261 Stephenson Highway**

Excellent location  
South of 13 Mile Road

**13,200 SF**

**R & D Facility**  
Available for Sale or Lease

*Not to Scale*  
*Positions of walls are approximate*  
*and subject to verification*

2.5.2009

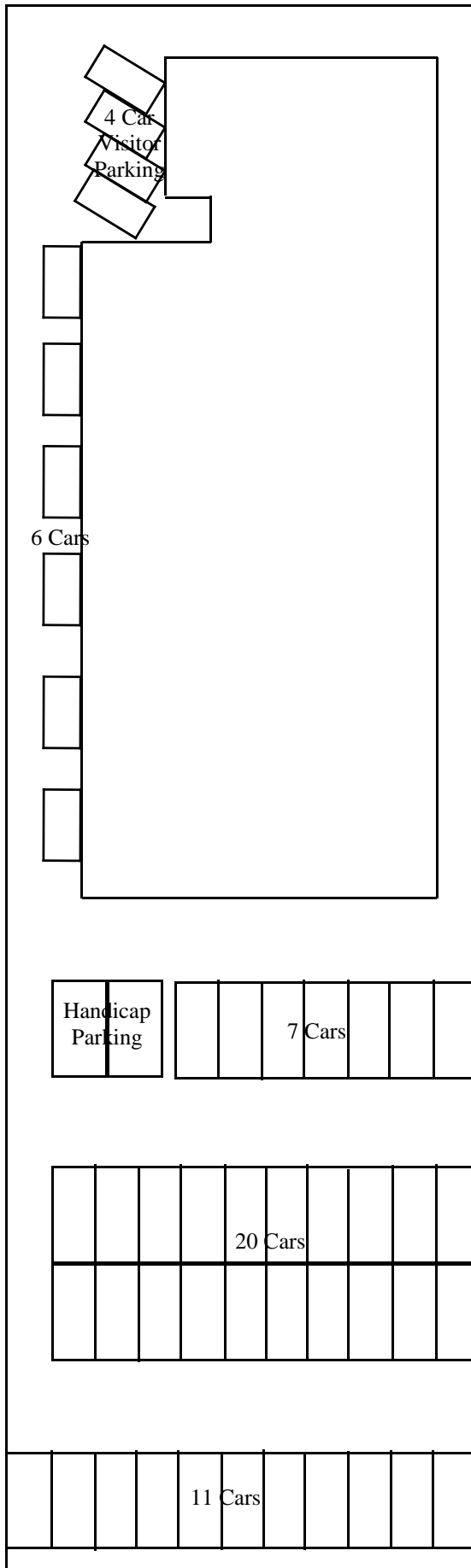
Leased and Managed by:

**ARI-EL**

Ari-El Enterprises, Inc.

**(248) 557-3800**

**www.ari-el.com**



**30261 Stephenson Highway**  
 Excellent location  
 South of 13 Mile Road

**13,200 SF**  
 R & D Facility  
 Available for Sale or Lease

*Not to Scale*

2.5.2009

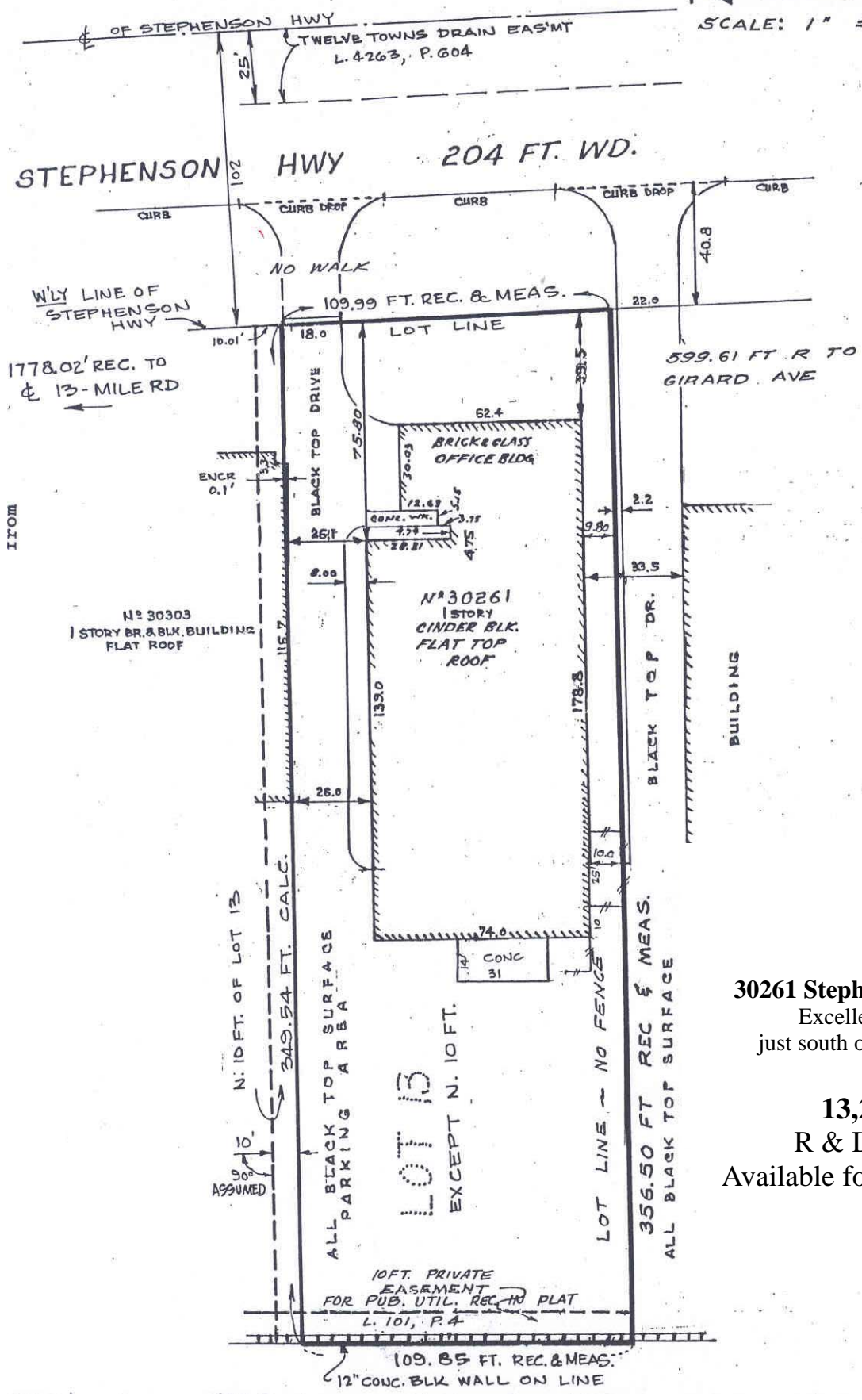
Leased and Managed by:



Ari-El Enterprises, Inc.  
**(248) 557-3800**  
[www.ari-el.com](http://www.ari-el.com)



SCALE: 1" = 40'



**30261 Stephenson Highway**  
 Excellent location  
 just south of 13 Mile Road

**13,200 SF**  
 R & D Facility  
 Available for Sale or Lease