

PRIME OFFICE/MEDICAL SPACE FOR LEASE

29355 Northwestern Highway

SOUTHFIELD, MICHIGAN



Conveniently located on the southbound side of Northwestern Highway with easy access to Telegraph, I-696 the Reuther and M-10 the Lodge ("mixing bowl")

For further information or to schedule a tour, please contact:
Marilyn Meredith
or
Scott M. Leibovitz

Property Managed and Leased by:

ARI-EL

Ari-El Enterprises, Inc.

29548 Southfield Road, Suite 200
Southfield, MI 48076-2028

(248) 557-3800 Fax (248) 557-6442

www.ari-el.com

Mmeredith@ari-el.com

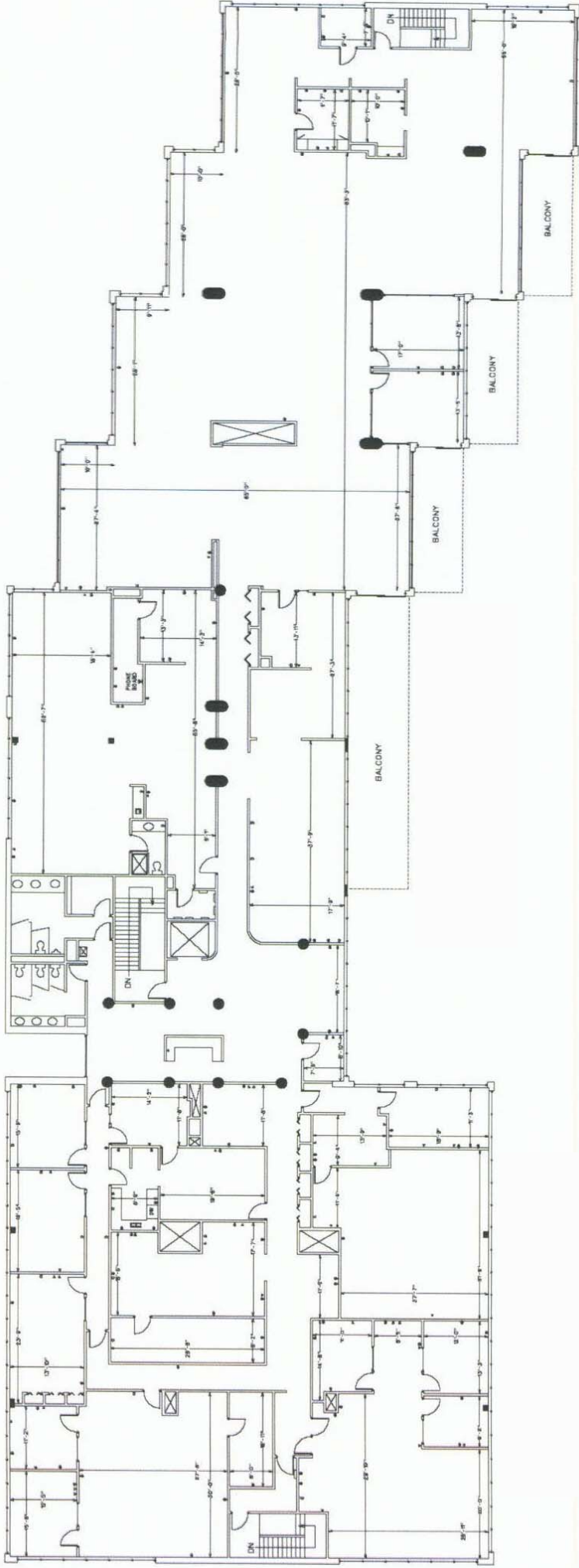
ScottL@ari-el.com



Information is subject to verification and no liability for errors or omissions is assumed. Price and terms are subject to modification.



29355 Northwestern Hwy. (formerly known as Carson Office Center)



CARSON OFFICE CENTER
29355 Northwestern Highway
Southfield, Michigan

Third Floor
Approximate 20,000 Rentable Square Feet

7.1.2011

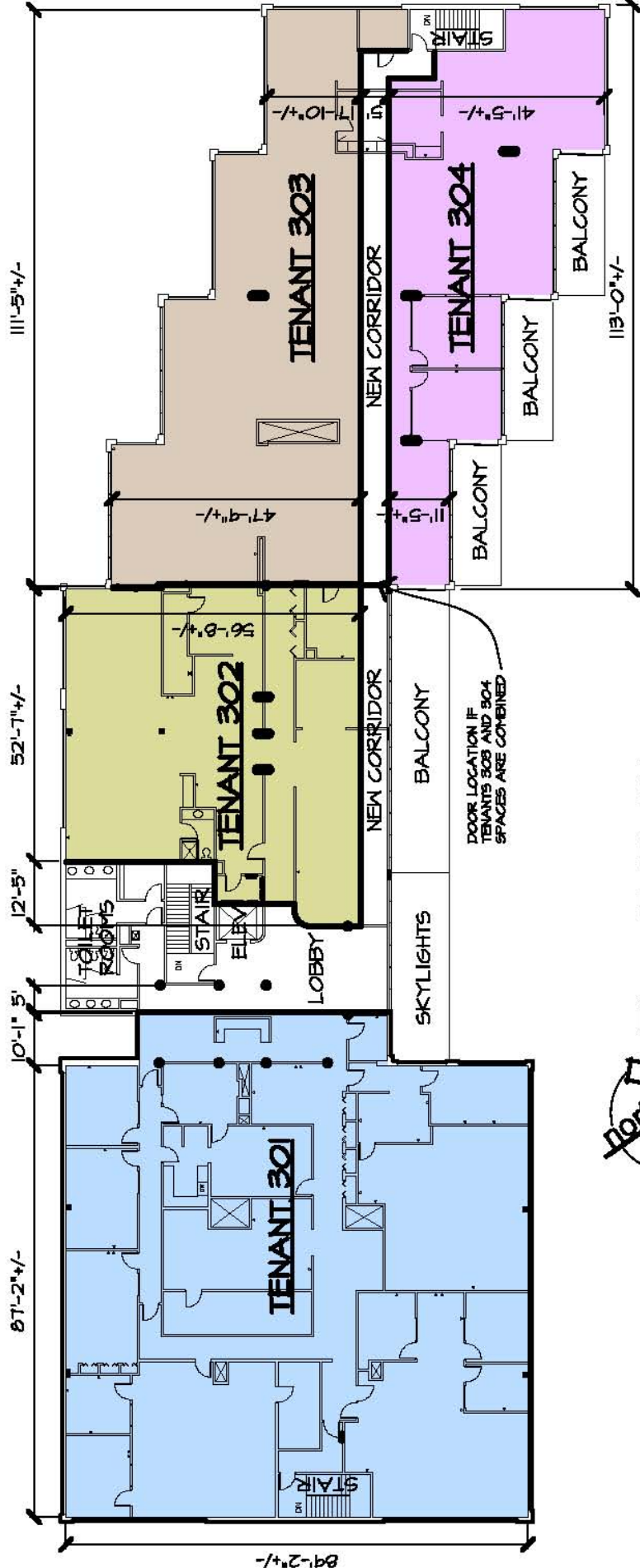
Managed and Leased by:

ari-el

Ari-El Enterprises, Inc.
(248) 557-3800
www.ari-el.com

POTENTIAL SUBDIVISION OF FLOOR	
TENANT 301	8,252 SQ. FT.
TENANT 302	3,274 SQ. FT.
TENANT 303	3,643 SQ. FT.
TENANT 304	2,690 SQ. FT.
CORRIDOR/ STAIR (BTWN 303 & 304)	804 SQ. FT.
COMMON AREA	1,752 SQ. FT.

NOTE: ALL SQUARE FOOTAGES ARE APPROXIMATE PENDING FIELD VERIFICATION



FLOOR PLAN
SCALE: 1" = 30'-0"

ARI-EL
ARI-EL ENTERPRISES, INC.
Real Estate & Development Services
(248) 557-3800

CARSON CENTER - THIRD LEVEL
29355 NORTHWESTERN, SOUTHFIELD, MI
02.04.2011

AVZD
architects
248.540.6004

29355 Northwestern Highway

