

# PRIME RETAIL SPACE FOR LEASE

**CONFIDENTIAL OFFERING**  
Please Do Not Disturb Tenant!

## 29321 ORCHARD LAKE ROAD FARMINGTON HILLS, MICHIGAN



### 8,625 square feet

- ◆ Frontage on Orchard Lake Road
- ◆ Maximum visibility signage
- ◆ Easy Access
- ◆ \$94,845 Median household income within 3 mile radius (2005)
- ◆ Excellent Traffic Count - 41,700 VPD\*

\*per SEMCOG

### Zoning

B-2, Commercial  
Business District

Retail or Service Oriented Businesses

For further information or  
to schedule a tour,  
please contact:

**Scott Leibovitz or  
Marilyn Meredith  
248-557-3800**

Property Managed and Leased by:

**ARI-EL**

**Ari-El Enterprises, Inc.**

29548 Southfield Road, Suite 200  
Southfield, MI 48076-2028

(248) 557-3800 Fax (248) 557-6442

[www.ari-el.com](http://www.ari-el.com)

[scottL@ari-el.com](mailto:scottL@ari-el.com)

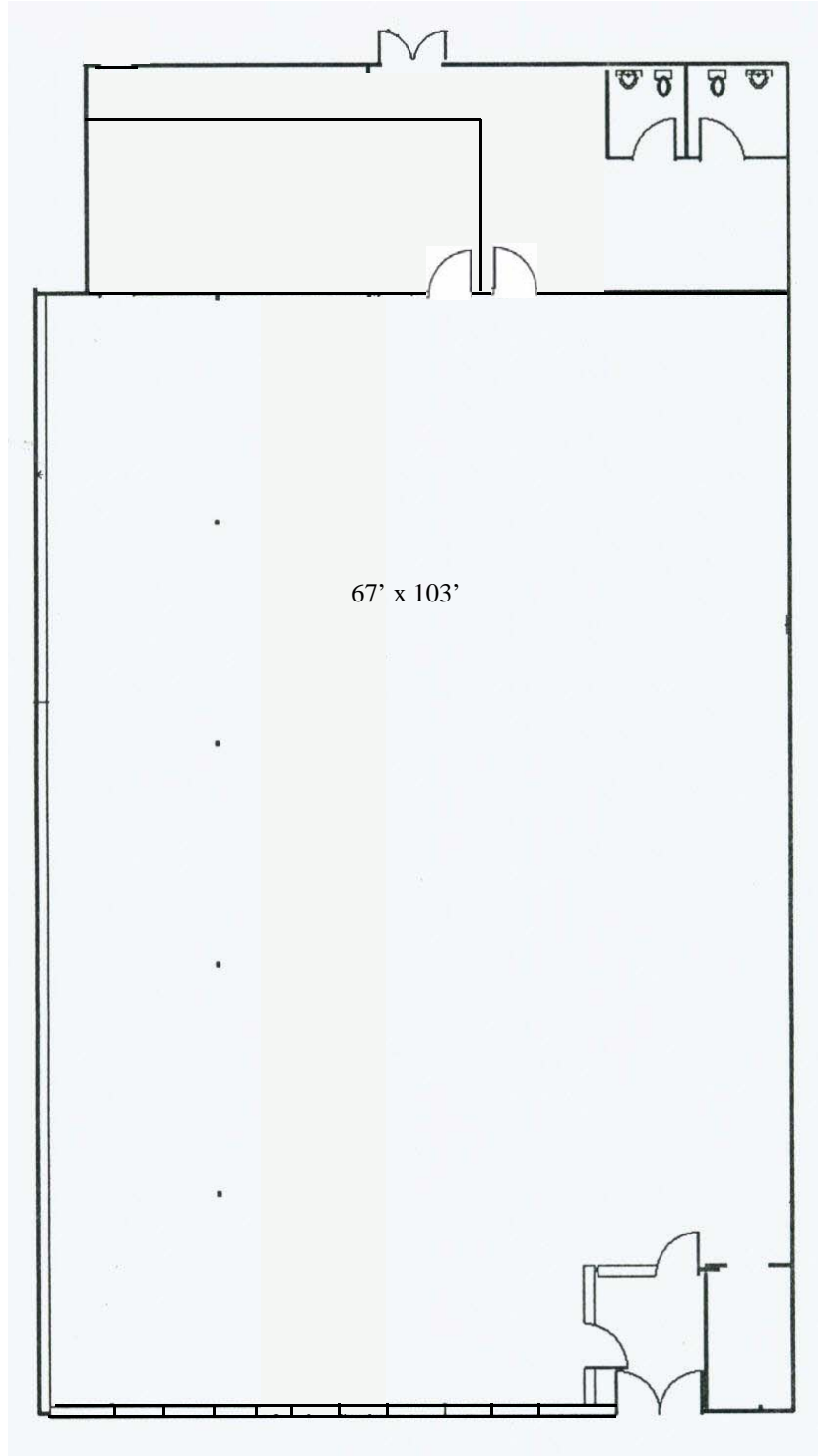
[Mmeredith@ari-el.com](mailto:Mmeredith@ari-el.com)



Information is subject to verification and no liability for errors or omissions is assumed. Price and terms are subject to modification.

3.24.2009

# FLOOR PLAN



Property Managed by:



**29321 ORCHARD LAKE ROAD**

**FARMINGTON HILLS, MICHIGAN**

**8,625 SQUARE FEET**

3.24.2009