

INDUSTRIAL BUILDING FOR LEASE

18,632 SQUARE FEET

MADISON HEIGHTS, MICHIGAN



1700 East Lincoln
I-696 at Dequindre
Minutes from I-696 & I-75



- ◆ 1,981 Sq. Ft. Office
- ◆ 16'-18' Clear in Warehouse
- ◆ Multiple Truck Docks (a double & a single)
- ◆ 4 Grade Level Doors
- ◆ 1.03 Acres
- ◆ 1,300 SF fenced outside storage at rear of building
- ◆ Well maintained light industrial area
- ◆ 240V / 400 AMP
- ◆ Excellent for many uses

ARI-EL

Ari-El Enterprises, Inc.
29548 Southfield Road, Suite 200
Southfield, MI 48076-2028

(248) 557-3800

Fax (248) 557-6442

www.ari-el.com

Mmeredith@ari-el.com

ScottL@ari-el.com

**For further information or
to schedule a tour,
please contact:
Marilyn Meredith
or
Scott M. Leibovitz**

Information is subject to verification and no liability for errors or omissions is assumed. Price and terms are subject to modification.



ARI-EL

Ari-El Enterprises, Inc.

29548 Southfield Road, Suite 200

Southfield, MI 48076-2028

(248) 557-3800 Fax (248) 557-6442

www.ari-el.com

Mmeredith@ari-el.com

ScottL@ari-el.com

1700 E. Lincoln
Madison Heights, Michigan



ARI-EL

Ari-El Enterprises, Inc.

29548 Southfield Road, Suite 200

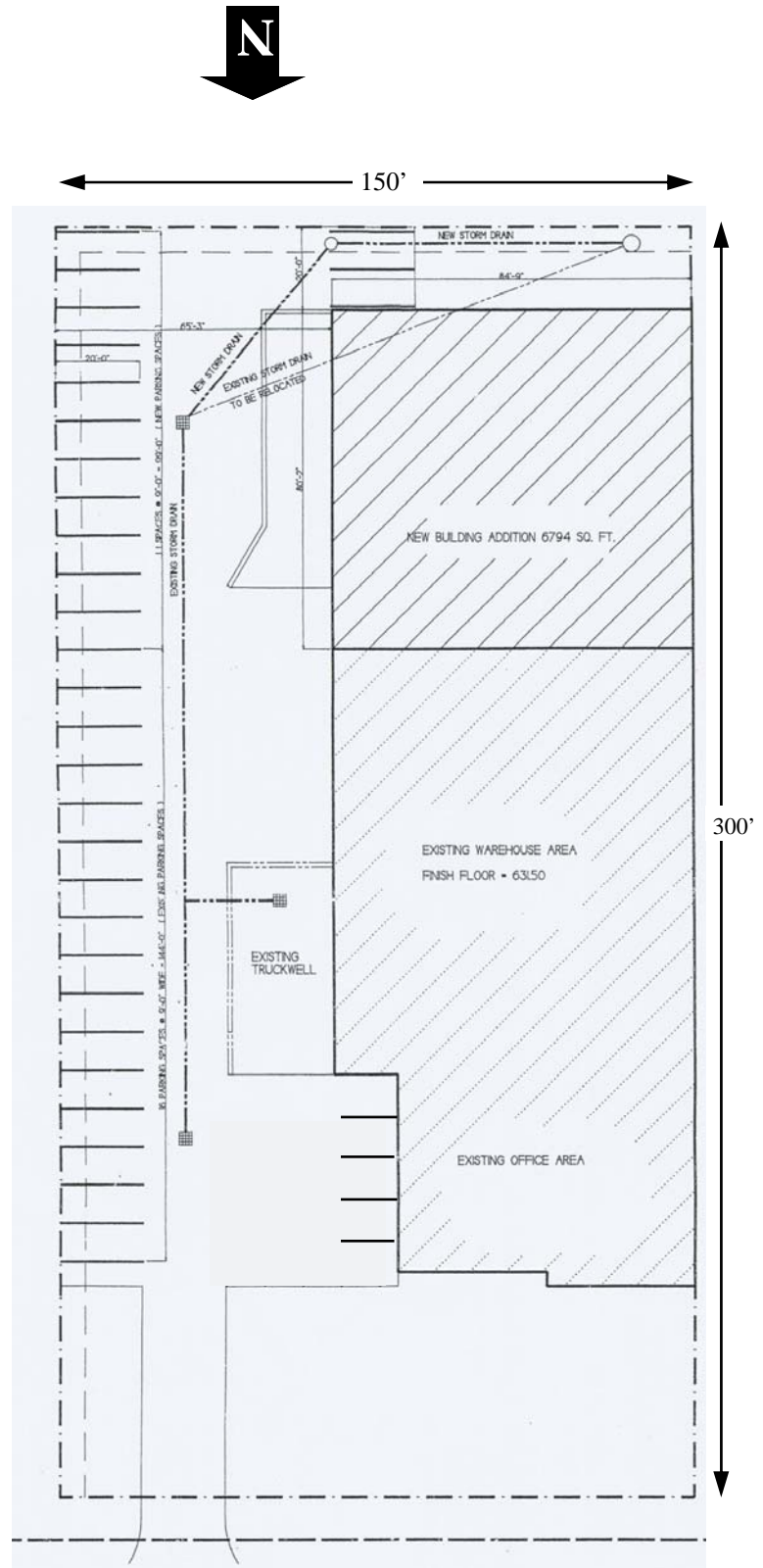
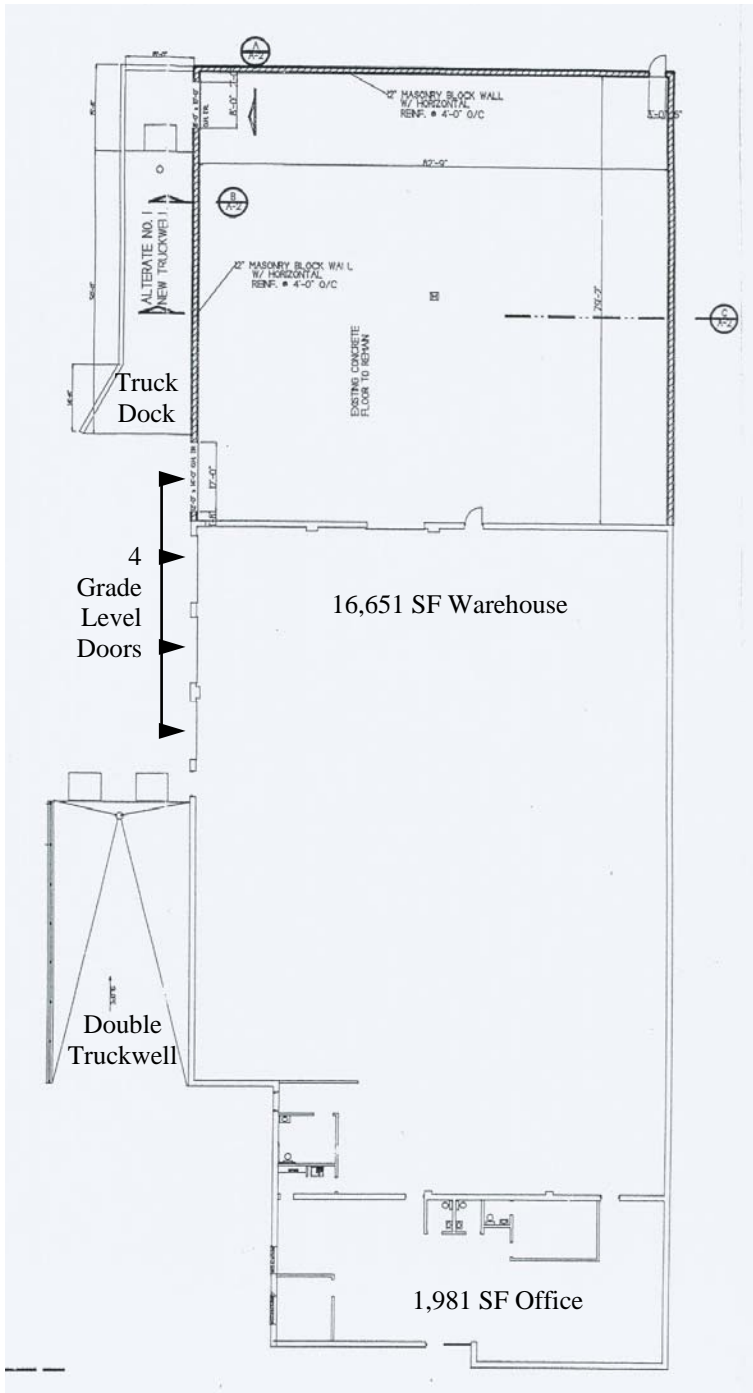
Southfield, MI 48076-2028

(248) 557-3800 Fax (248) 557-6442

www.ari-el.com

Mmeredith@ari-el.com

ScottL@ari-el.com



1700 East Lincoln

ARI-EL

Ari-El Enterprises, Inc.

29548 Southfield Road, Suite 200

Southfield, MI 48076-2028

(248) 557-3800 Fax (248) 557-6442

www.ari-el.com

Mmeredith@ari-el.com

ScottL@ari-el.com